

Re-tuning: DIGILOGIC Freeview Boxes

9 Steps
(Steps 1-5)

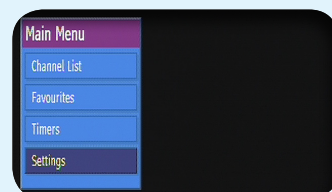
This guide can be used to help you re-tune any of the following products with the remote control below:

Digilogic DSTB1000 & DSTB1500, Wharfedale DV832, Durabrand C5660, Logik LDR1, Seg AESEGS7, Acoustic Solutions DV600, Matsui DTR1,DTR2,DTR31 & MSTB926, Techwood TWDFV2, Lodos DVBT3, Mitsubishi BD68STB, ONN OSTB01

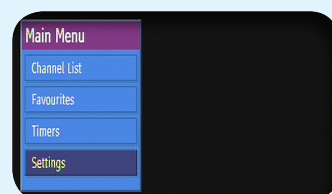
Make sure your box is on and press 80 for the BBC News channel



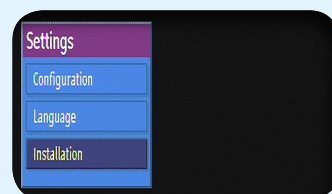
- 1) Press the Menu button



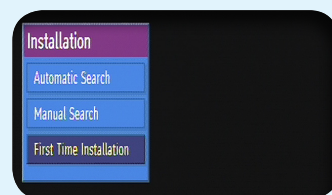
- 2) Use the Down Arrow button to select Settings on the fourth line of the menu and press the Select button



- 3) Use the Down Arrow button to select Installation on the third line of the menu and press the Select button



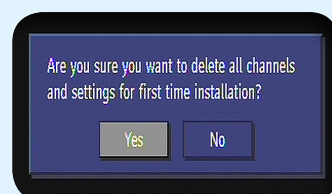
- 4) Use the Down Arrow button to select First Time Installation and press the Select button



The message 'Are you sure you want to delete all channels' will appear



- 5) **Don't worry!** Use the arrow buttons to select Yes and press the Select button to confirm



Manufacturer Helpline: 01753 834 501

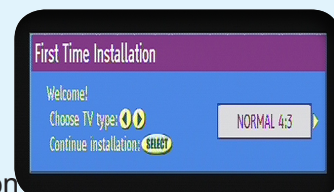
email: info@vestel-uk.com

Re-tuning: DIGILOGIC Freeview Boxes

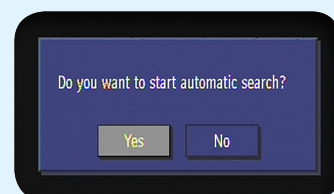
9 Steps
(Steps 6-9)



- 6) Press the **Select** button for a 4:3 TV or use the arrow buttons to select 16:9 for a widescreen TV and press the **Select** button

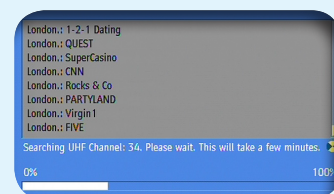


- 7) Use the arrow buttons to select **Yes** and press the **Select** button



- 8) A re-tune screen will appear

No action required



- 9) BBC 1 will automatically play out when the retune has completed

No action required



You have completed the procedure and can continue viewing digital channels.

Manufacturer Helpline: **01753 834 501**

email: **info@vestel-uk.com**