

Re-tuning: LINSAR LDT1 Freeview Box

8 Steps
(Steps 1-5)

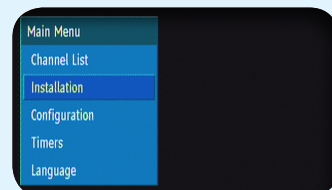
This guide can be used to help you re-tune any of the following products with the remote control below:

Linsar LDT1, Digihome DV940B, Matsui DTR3,
Goodmans GDB2, Pacific PSTB1, Pacific PSTB0802
Hitachi HDB60, Hitachi HDB65

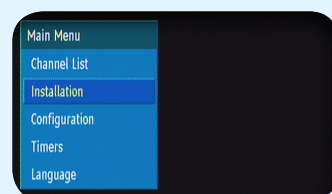
**Make sure your box is on and press 80
for the BBC News channel**



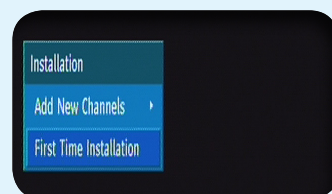
- 1) Press the **Menu** button once



- 2) Using the **Down Arrow** button select **Installation** on the second line of the menu and press the **Select** button



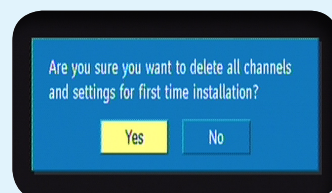
- 3) Using the **Down Arrow** button select **First Time Installation** and press the **Select** button



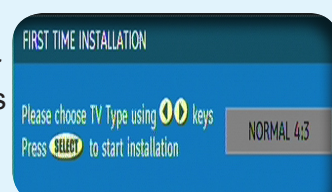
The message 'Are you sure you want to delete all channels...' will appear



- 4) **Don't worry!** Select **Yes** to confirm and press the **Select** button



- 5) Press the **Select** button for a 4:3 TV or use the arrow buttons to select 16:9 for a widescreen TV and press the **Select** button



Manufacturer Helpline: **01753 834501**

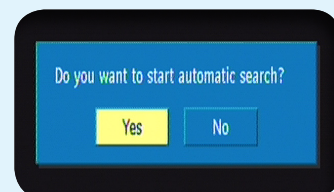
email: **info@vestel-uk.com**

Re-tuning: LINSAR LDT1 Freeview Box

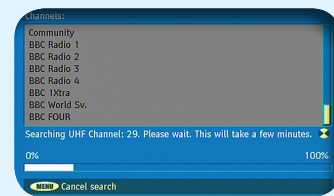
8 Steps
(Steps 6-8)



- 6) Select **Yes** and press the **Select** button



- 7) A re-tune screen will appear
- No action required



- 8) BBC1 will play out when the re-tune has completed
- No action required



You have completed the procedure and can continue viewing digital channels.

Manufacturer Helpline: **01753 834501**

email: **info@vestel-uk.com**