

Re-tuning: LG Freeview TVs

6 Steps
(Steps 1-5)

This guide can be used to help you re-tune any of the following products with the remote control below:

*LF2500 series, *LH4900 series,
*LH2000 - *LH2020 series, *LH3000 - *LH3030 series,
*LH4000 - *LH4020 series, *LH7000 - *LH7030 series,
*LU5000 - *LU5020 series, *PS7000 - *PS8000 series.

*Your model size appears here

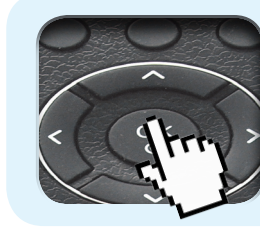
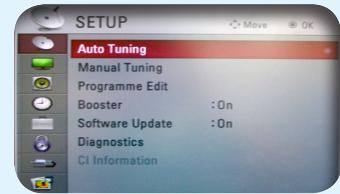
Make sure your box is on and press 80 for the BBC News channel



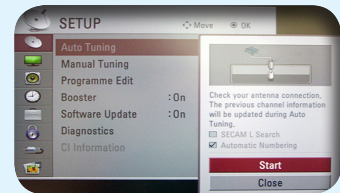
- 1) Press the Menu button and select Setup. Press the OK button



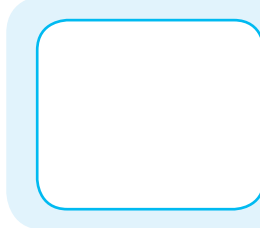
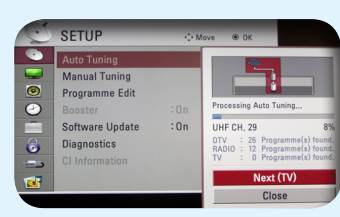
- 2) Select Auto Tuning on the first line of the menu and press the OK button



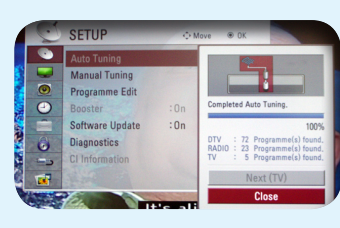
- 3) Select Start and press the OK button



- 4) A re-tune screen will appear. To skip the re-tune for analogue channels select Close and press the OK button



- 5) A completion screen will appear with BBC1 playing out in the background
No action required

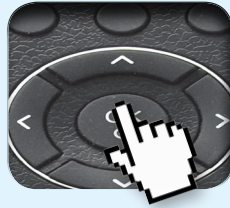


Manufacturer Helpline: **0844 847 5454**

email: Online form at www.lge.com

Re-tuning: LG Freeview TVs

6 Steps
(Steps 6-6)



6) Press the OK button to close the menu and view channels



You have completed the procedure and can continue viewing digital channels.

Manufacturer Helpline: **0844 847 5454**

email: Online form at www.lge.com