

# LOGIK

## Digital TV Recorder User Guide



**DVB**<sup>®</sup>  
Digital Video  
Broadcasting

digital   
Approved product

# LPV 2250

## Welcome

---

Thank you for buying this Digital TV Recorder.

**This product allows you to enjoy free-to-view Digital TV on any television, and record your favourite programmes at the touch of a button.**

**Your Digital TV Recorder is simple to install - please follow the installation instructions carefully.**

**Before you begin, make sure you have easy access to the connectors on your TV and any other connected equipment.**

**Please take the time to read the safety instructions before setting up your Digital TV Recorder.**

This Digital TV Recorder has been manufactured to meet international safety standards, but you must take care to operate it safely.

If you have any doubts about the installation, operation or safety of this Digital TV Recorder, see the Helpline details section towards the rear of this guide.

### Electrical warning:

- Your Digital TV Recorder contains a high voltage, which is sufficient to cause a dangerous electric shock.
- Do not remove the cover. There are no user-serviceable parts inside and you CANNOT upgrade the Hard Disk.
- Only use the supplied power supply (or manufacturer's replacement) with your Digital TV Recorder.
- Switch off the power supply from the mains wall socket before you connect or disconnect any equipment from the Digital TV Recorder.

### Positioning the box:

- The Digital TV Recorder and cables should be placed so that they are not likely to be walked on or pinched by items placed upon or against them.
- Do not place the Digital TV Recorder on an unstable surface or on a bed, sofa, rug, or similar surface as this may block air ventilation and cause it to overheat. Never place the Digital TV Recorder over a radiator or in an unventilated cabinet.
- Never place the Digital TV Recorder on top of a loudspeaker as the vibrations and magnetic field may damage the Digital TV Recorder's Hard Disk.

### Unplug when not in use:

- When not in use for an extended period, unplug the Digital TV Recorder from the mains outlet. Do not overload wall outlets and extension adaptors as this can result in a risk of fire or electric shock.

### Please note:

- Please keep this guide and product packaging in a safe place.
- This product can be stored in its original packaging in a cool dry place at a temperature between -20°C and +60°C. Wait until the product has reached room temperature before use.
- If any parts are missing, do not attempt to install this product. Please refer to the Helpline details section towards the rear of this guide.

### Maintenance:

- Refer all maintenance and servicing to qualified personnel. Any attempt to service the product or use non-recommended parts will invalidate the warranty. For more detailed safety information, read the safety instructions at the back of this guide.

**For more detailed safety information, read the safety instructions at the back of this guide.**

## Index of contents

Remote control buttons .....	4
Package contents .....	6
Attaching the supplied feet .....	6
Safe installation .....	6
Connections on the rear of your Digital TV Recorder .....	7
Symbols on the front of your Digital TV Recorder .....	7
Setting up your Digital Box with a SCART cable .....	8
Using your Digital Box for the first time .....	11
Using the Electronic Programme Guide .....	12
Info display .....	12
The Channel List .....	13
The Timers screen .....	13
The Library menu .....	15
Recording programmes .....	17
Instant Record .....	17
Record using the Electronic Programme Guide .....	18
Record using the Manual Timer .....	18
Record using the Info display .....	18
Watch a recording .....	19
Timeshifting .....	20
The menu system .....	21
Edit Channel List .....	21
Settings .....	22
DVR Settings .....	24
Parental Control .....	26
Tuning .....	27
Service .....	27
Software Upgrade .....	27
Using Interactive TV and Teletext .....	28
Programming the remote control .....	28
Finding the remote control's current codes .....	29
Controlling a TV and DVD player .....	30
General problem solving .....	31
Helpline details .....	32
Product technical specifications .....	32
Important care and safety advice .....	33
Environmental information .....	34
Remote Control Code List .....	34

## Remote control buttons



	Turns the TV's sound on/off*.
DTV/RADIO	Switches between Digital TV channels and Digital Radio channels.
	Switches the Digital TV Recorder, TV* or DVD* on/into standby.
MODE buttons (TV, DTV, DVD)	Sets the remote control to operate the Digital TV Recorder, a TV or DVD*.
MENU	Displays/exits the menu.
HELP	Displays/exits the Help pages.
SAVER/CLOCK	Displays the Clock for 4 seconds. With the Clock displayed, press again to display the Screen Saver.
	Returns to the previous channel watched. Switches between 4 and 24 hours advance in EPG.
EPG	Switches the Electronic Programme Guide (EPG) on/off.
BACK	Returns to the previous level in the menu. Exits EPG, Info and Menu (first level).
INFO	Displays programme and recording information.
VOL. +/-	Adjusts the TV's volume*.
OK, , , ,	Displays the Channel list/confirms a selection (OK button). Navigate the EPG/menu/Channel list/Info menu (, , ,  buttons).
CH. +/-	Selects the next/previous channel.
STOP	Stops playback when viewing recordings. Stops timeshifting.
	Rewinds live TV and recordings. Press repeatedly to increase the rewind speed.
	Pauses live TV and recordings.
	Plays recording and resumes paused live TV and recordings.
	Fast forwards recordings. Press repeatedly to increase the fast forward speed. When pausing live TV or recordings, press to watch in slow motion.

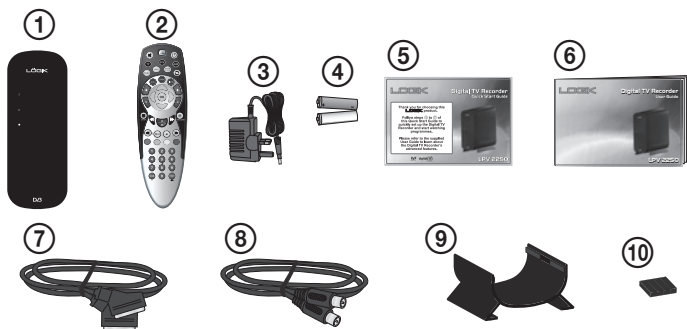
Remote control buttons - continued



● RECORD	Records live TV. Sets highlighted programmes to timer record in the EPG.
⏮	Skips to the start when viewing a recording. Skips to the start of the pause buffer when watching live TV.
TIMER	Displays the Timers screen.
LIB	Displays the Library of recorded programmes.
⏭	Skips to the end when viewing a recording.
Coloured buttons	Selects options in digital text/EPG/Channel List/menu.
0-9	Selects channels, enter PIN, use Help pages.
SUB/AV	Displays subtitles (if available). In TV mode, changes the Video Input on the TV*.
TEXT/-/--	Displays digital text (if available). In TV mode, selects double digit channel numbers*.

\*Once the remote control has been programmed to operate your equipment. Refer to page 28.

## Package contents



- |                       |                        |
|-----------------------|------------------------|
| ① Digital TV Recorder | ② Remote Control       |
| ③ Power Supply        | ④ 2 Batteries (AA/R06) |
| ⑤ Quick Start Guide   | ⑥ User Guide           |
| ⑦ SCART Cable         | ⑧ RF (coaxial) Cable   |
| ⑨ Stand               | ⑩ 4 Rubber Feet        |

## Using this guide

We hope you will find this Digital TV Recorder easy to set up and use. To make this user guide as clear as possible, we have designed it so that ...

- Instructions that you need to follow are preceded by a bullet point - just like this sentence.

**Important information will be in bold text - just like this sentence.**

When you have to press a specific button on your remote control, it is written between brackets [like this].

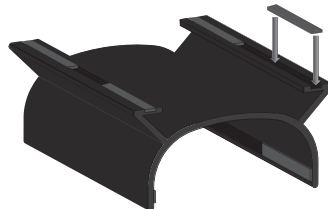
Useful hints and tips are shown in a box, like this.

**If you have any problems with this product, you will find most common solutions towards the back of this guide.**

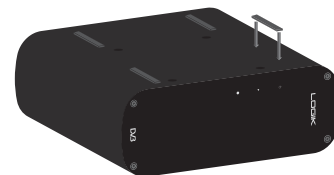
## Attaching the supplied feet

Follow the instructions below to attach the supplied feet, according to which way you wish to install the Digital TV Recorder:

### Using the stand (installing vertically):

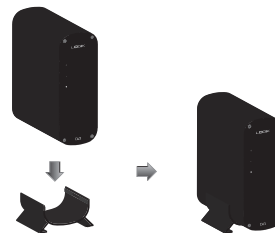


### Not using the stand (installing horizontally):



## Safe installation

### Using the stand (installing vertically):

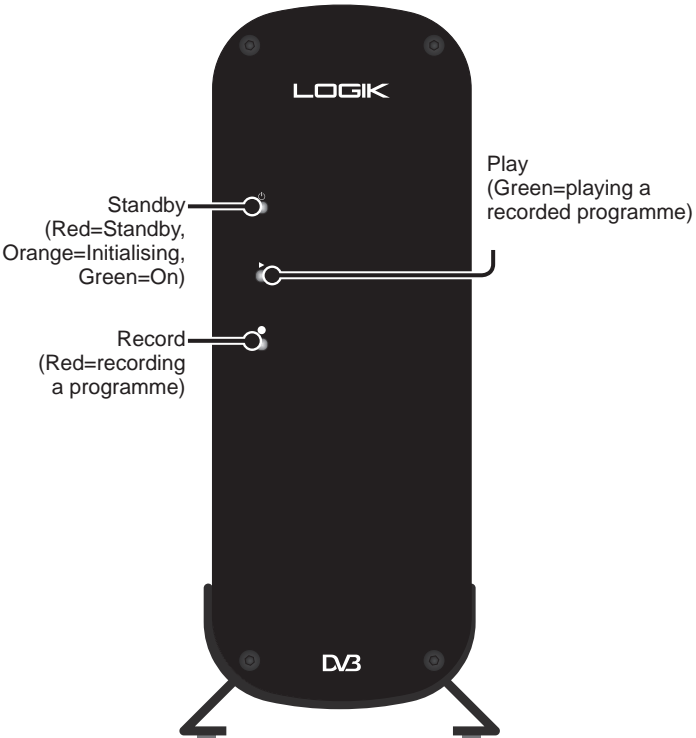
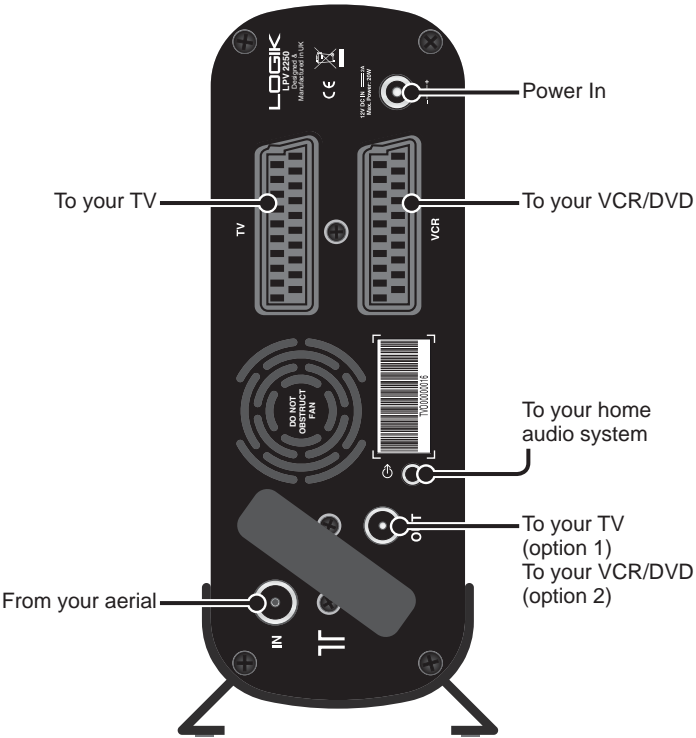


**Always use the supplied stand when installing the Digital TV Recorder vertically, as shown. NEVER attempt to install the Digital TV Recorder vertically without the supplied stand, or with any other stand as this may result in damage to the Digital TV Recorder.**

### Not using the stand (installing horizontally):



**Always install the Digital TV Recorder horizontally as shown, on a stable surface. Failure to do so may result in damage to the Digital TV Recorder.**



## Setting up your Digital TV Recorder with a SCART cable

You need a free SCART socket on your TV to set up your Digital TV Recorder.

SCART connections offer the best picture and sound quality. They can also tell your TV when the Digital TV Recorder is switched on and off and whether widescreen pictures are being broadcast.

Before you begin, make sure you have easy access to the connectors on your TV and any other connected equipment.

### 1 Unpack the Box:

- Unpack the Box and check there are no parts missing. Use the Package contents page as a reference.
- Choose a suitable location for the Digital TV Recorder. Make sure it will have sufficient ventilation and is not exposed to direct sunlight, heat, humidity or water. Make sure you can 'see' it with the remote control.

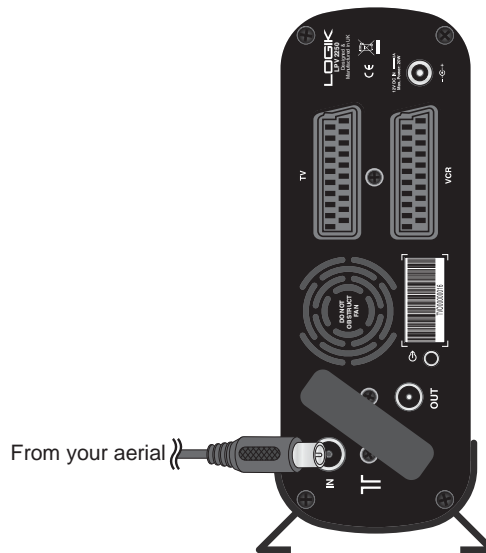
### 2 Insert remote control batteries:

- Open the remote control battery compartment - on the under-side of the remote control.
- Insert the batteries supplied in the direction indicated inside the compartment.
- Refit the compartment cover.



### 3 Connect your aerial to the Digital TV Recorder:

- Make sure your TV is switched off, together with any other equipment you are connecting to.
- Insert the cable from your aerial into the Digital TV Recorder socket marked 'IN'.





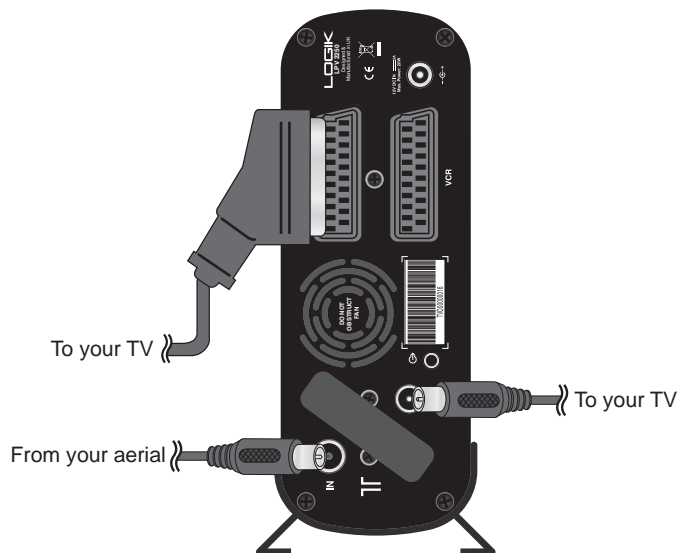
## Setting up your Digital TV Recorder with a SCART cable - continued

### 4 Connect the SCART cable:

Choose the option below that best suits your TV (and VCR/DVD, if you have one). If you need a longer SCART cable, you can buy one at most TV or electronics retailers.

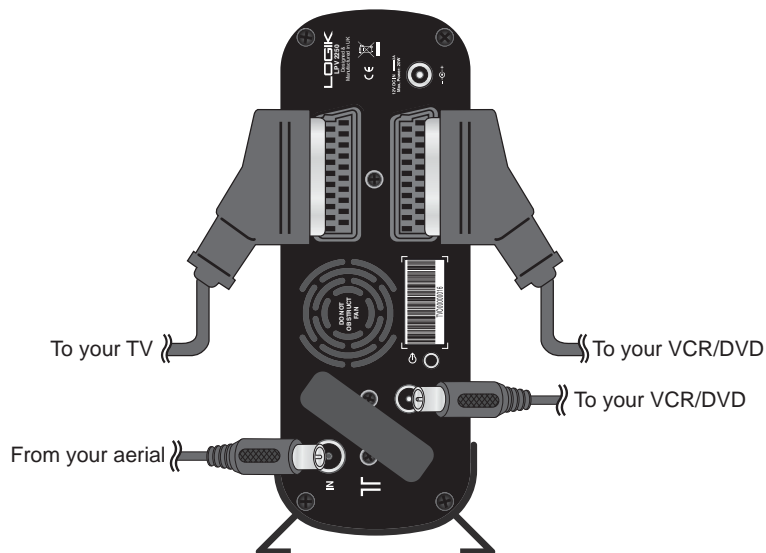
#### Option 1 : connecting to a TV only

- Connect the supplied SCART cable between the 'TV' SCART socket on your Digital TV Recorder's rear panel and your TV's SCART socket.
- Connect the supplied RF cable between the 'T OUT' socket on the Digital TV Recorder and the RF socket on your TV (where you would normally connect the aerial).





#### Option 2 : connecting to a TV and VCR/DVD

- Connect the supplied SCART cable between the 'TV' SCART socket on the back of your Digital TV Recorder and your TV's SCART socket.
- Connect another SCART cable between the 'VCR' SCART socket on your Digital TV Recorder and the SCART socket on your VCR/DVD. (Refer to your VCR/DVD user guide if necessary.)
- Connect the supplied RF cable between the 'T OUT' socket on the Digital TV Recorder and the RF input socket on your VCR/DVD. (Refer to your VCR/DVD user guide if necessary.)
- If there isn't already one in place, connect a second RF cable between the RF output on your VCR/DVD and the RF input socket on your TV. (Where you normally connect the aerial.)

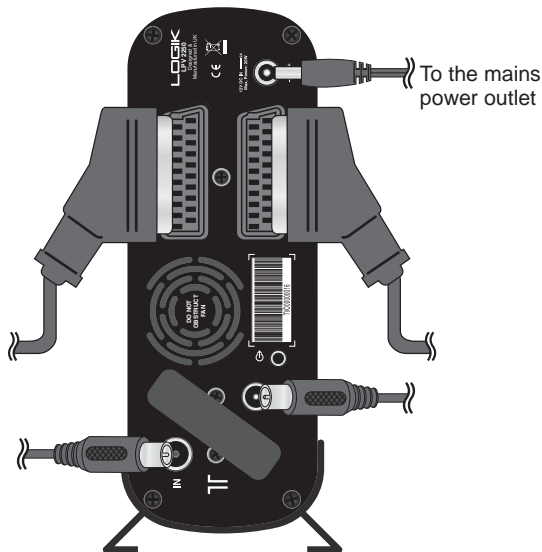


## 5 Connecting to an audio system (optional):

- Connect the  socket on the back of Digital TV Recorder to your home audio system using either a conventional 3.5mm jack plug lead or an optical lead (miniTOS). The type of lead required depends on your Hi-Fi or Surround Sound System. Do not connect your headphones to the  socket.

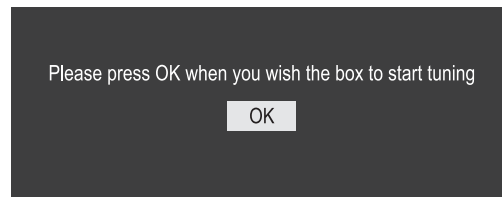
## 6 Connect the power supply:

- Make sure the mains outlet is switched off.
- Connect the supplied power supply to the Digital TV Recorder and insert the power supply plug into the mains outlet.



## 7 Switch on your TV:

- Switch on your TV and the mains outlet for the Digital TV Recorder.
- The green Power light on your Digital TV Recorder should illuminate.
- Your TV should switch to the Digital TV Recorder automatically and the image below will appear.

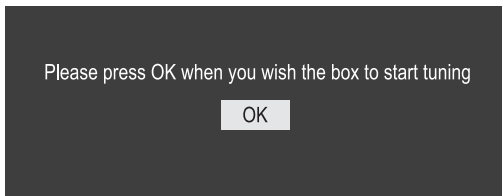


If you cannot see the picture, refer to the General problem solving section towards the end of this guide.

**You are now ready to tune in to the digital TV service.**

## Using your Digital TV Recorder for the first time

The first time you use your Digital TV Recorder, you will see a screen like the one below.

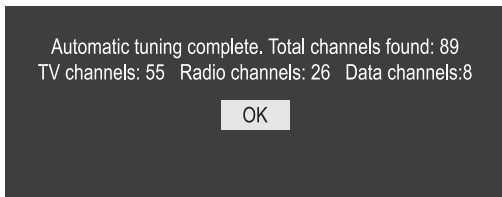


The Digital TV Recorder now needs to scan for available Digital TV channels.

- Press [OK] on your Digital TV Recorder's remote control to begin searching for digital channels.

Typically, the search will take between 2 and 5 minutes, depending on the digital TV service in your area. In some areas, however, it may take a little longer (5 to 7 minutes).

- When the scan has finished, the Digital TV Recorder will display a summary screen. Press [OK] on your Digital TV Recorder's remote control to switch to the first channel.



You can now explore and enjoy the channels available on your Digital TV service.

### Using Standby:

When you're not watching TV, you should set your Digital TV Recorder to Standby.

#### To do this:

- Press [⏻] to switch between ON (green POWER light on) and Standby (red POWER light on).

If you plan to leave your Digital TV Recorder unattended for a long period, put the Box into Standby and wait 20 seconds before switching it off at the mains. (Don't worry - all of your settings will be saved.)

### Changing channels:

- Press [CH.+] or [CH.-] on your Digital TV Recorder remote control to 'hop' through the channels.

#### To choose a particular channel:

- Press one of the buttons [0] to [9], then press [OK].
- To select 2 or 3 digit channels (10 to 999), press the number buttons required in succession, then press [OK].
- If you do not press [OK], the Digital TV Recorder will change to the selected channel after approximately 1 second.

### Channel hopping:

- The [↺↻] button lets you keep an eye on two TV channels by switching between the current channel and the last channel you watched for more than 11 seconds - so you can 'hop' between the two channels.

## Using the Electronic Programme Guide

The Electronic Programme Guide shows a full list of available channels and programmes for up to 8 days (when transmitted by broadcasters). You can also set programmes to be recorded from the Electronic Programme Guide.

### To view the Electronic Programme Guide:

- Press the [EPG] button.
- Press [▲] or [▼] to scroll through the list of channels.

To display the previous 9 channels press [RED].  
To display the next 9 channels press [GREEN].

- To scroll through the programmes press [↩] and [↪].
- To scroll forwards 24 hours at a time, press [BLUE]. To scroll backwards, press [YELLOW].

To scroll forwards 4 hours at a time, press [↺] to toggle the scroll settings, then press [BLUE]. To scroll backwards, press [YELLOW].

- To view information for the selected programme press [INFO].
- To record the selected programme press [● RECORD].
- To preview the highlighted channel in the background, press [OK].
- To exit the Electronic Programme Guide and change channel to the previewed programme, press [OK].
- To exit the Electronic Programme Guide without changing channel, press [EPG] or [BACK].

## Info display

The Info display gives you information on the current and future programmes on each channel.

- To open the Info display press [INFO]. This displays information on the programme showing Now.
- To see information on future programmes, press [→].
- To change the channel you want information for press [▲] or [▼].
- To watch the highlighted channel press [OK].
- To record the selected programme press [● RECORD].
- To exit the Info display menu without changing channel press [INFO] or [BACK].

### Information for recordings

When watching recordings, the Info display gives you information on the recording, such as the date and time the recording was made, and how much of the recording has been watched.

- To open the Info display press [INFO]. This displays information on the recording showing.
- To exit the Info display menu press [INFO] or [BACK].

## The Channel List

The Channel List displays all the available channels.

### To view the Channel List:

- Press the [OK] button.
- Press [▲] or [▼] to scroll through the list of channels.

To display the previous 9 channels press [RED].

To display the next 9 channels press [GREEN].

- To exit the Channel List and change channel to the selected channel, press [OK].
- To exit the Channel List without changing channel, press [BACK].

## The Timers screen

The Timers screen displays all the programmes that are currently set to record (timer events). You can also set a manual timer and modify or cancel an existing timer.

### To view the Timers screen:

- Press the [TIMER] button.
- Press [▲] or [▼] to scroll through the list of timer events.
- Press [◀] or [▶] to view additional pages (if available).
- To exit the Timers screen press [TIMER] or [BACK].

### To delete a timer event:

- Press [▲] or [▼] to highlight the required timer event.
- Press [RED].
- Press [◀] or [▶] to select Yes.
- Press [OK] to delete the timer event.

### To change the channel, start time and end time of a timer event:

- Press [▲] or [▼] to highlight the required timer event.
- Press [GREEN].
- Press [▲] or [▼] to highlight the Channel, Start time/date or End time/date.
- Press [◀] or [▶] to change the channel. Press [0-9] to change the start and end times.


## The Timers screen - continued

### To set a timer event to repeat:

You can set the timer event to be repeated once, daily or weekly.

#### To do this:

- Press [▲] or [▼] to highlight the required timer event.
- Press [GREEN].
- Press [▲] or [▼] to highlight Repeat.
- Press [◀] or [▶] to select Once, Daily or Weekly.

A  symbol is displayed in the timer screen next to timer events that have been set to repeat daily or weekly.

### To prevent a timer event from being changed or deleted:

You can prevent the timer event from being changed or accidentally deleted.

#### To do this:

- Press [▲] or [▼] to highlight the required timer event.
- Press [GREEN].
- Press [▲] or [▼] to highlight Change/Delete.
- Press [◀] or [▶] to select Allowed or Disallowed.

When Disallowed is selected, the PIN must be entered correctly before the timer event can be changed or deleted.

### To prevent a timer event from played:

You can set viewing permissions for the programme recorded by a timer event.

#### To do this:

- Press [▲] or [▼] to highlight the required timer event.
- Press [GREEN].
- Press [▲] or [▼] to highlight Playback.
- Press [◀] or [▶] to select Allowed, Disallowed or Use parental settings.
- **Allowed** - the recording can be viewed (even if it was recorded from a locked channel).
- **Disallowed** - the recording can only be viewed once the correct PIN has been entered.
- **Use parental settings** - if the recording is made from a locked channel it can only be viewed once the correct PIN has been entered.

To lock channels see Parental Control on page 26.

### To manually set a timer:

- With the Timers screen displayed, press [YELLOW].
- Press [▲], [▼], [◀], [▶] and [0-9] to select and set the Channel, Start time/date, End time/date, Repeat, Change/Delete and Playback settings.
- Press [GREEN] to save the timer.

## The Library menu

The Library menu displays all the recordings currently stored on the hard disk.

### To view the Library menu:

- Press the [LIB] button.
- Press [▲] or [▼] to scroll through the list of recordings.
- Press [←] or [→] to view additional pages (if available).
- To exit the Library menu press [LIB] or [BACK].

### To view a recording's information:

- Press [▲] or [▼] to highlight the required recording.
- Press [INFO] and to display the recording's information.

While viewing a recording's information you can also start watching the recording from the last played position or from a specific point.

- Press [BACK] to return to the Library menu.

### To watch a recording:

- Press [▲] or [▼] until the recording you wish to watch is highlighted.
- To start playback from the last played position press the [▶] button.
- To start playback from a specific position press [OK] and follow the on-screen instructions.

A ✓ symbol is displayed in the Library menu next to recordings that have been watched.

### To delete a recording:

- Press [▲] or [▼] until the recording you wish to delete is highlighted.
- Press [RED].
- Press [←] or [→] to select Yes.
- Press [OK] to delete the recording.

### To sort the order the recordings are displayed:


- Press [BLUE].
- Press [RED] to sort the recordings alphabetically.  
Press [GREEN] to sort the recordings by length.  
Press [YELLOW] to sort the recordings based on whether they have been watched.  
Press [BLUE] to sort the recordings by date.

### To prevent a recording from being deleted or played:

You can prevent recordings from being deleted unless the correct PIN is entered.

- Press [▲] or [▼] to highlight the required recording.
- Press [GREEN].
- Press [▲] or [▼] to highlight Delete.
- Press [←] or [→] to select Disallowed.
- Press [GREEN] to save the changes.

When Disallowed is selected, the PIN must be entered correctly before the recording can be deleted.

A  symbol is displayed in the Library menu next to recordings that have been protected from deletion.


## The Library menu - continued

### To prevent a recording from being played:

You can prevent recordings from being played unless the correct PIN is entered. This can be used to prevent children watching unsuitable recordings.

- Press [▲] or [▼] to highlight the required recording.
- Press [GREEN].
- Press [▲] or [▼] to highlight Playback.
- Press [⬅] or [➡] to select Disallowed.
- Press [GREEN] to save the changes.

When Disallowed is selected, the PIN must be entered correctly before the recording can be played.

A  symbol is displayed in the Library menu next to recordings that have been protected from playing.

- Press [▲] or [▼] to highlight Start playlist.
- Press [OK] to start the playlist.

If you are copying recordings to a video tape/DVD, don't forget to start recording on your VCR/DVD Recorder.

While the playlist is playing, press [▶▶] to skip to the next recording in the playlist.

While the playlist is playing, press [◀◀] to skip to the start of the current recording in the playlist.

### To set a playlist:

You can set multiple recordings to be played one after another in a playlist. This can be useful when saving multiple recordings to a video tape/DVD, or just to watch several recordings in one go.

- Press [▲] or [▼] to highlight the required recording.
- Press [YELLOW]. A ❶ is added by the recording's name.
- Repeat the previous 2 steps to add other recordings to the playlist. The second recording in the playlist is labelled ❷, the third ❸ and so on.
- With any one of the recordings in the playlist highlighted, press [OK].



## Recording programmes

---

Your Digital TV Recorder can record approximately 125 hours of programming. You can record from the radio channels as well as the TV channels.

There are four different ways to record programmes:

**Instant record** – you can record the channel you're watching at the touch of a button (unless a programme is already being recorded).

**Record using the Electronic Programme Guide** – you can use the 8-day Electronic Programme Guide to quickly choose the programmes you wish to record.

**Record using the Manual Timer** – you can use the Manual Timer in the Timer menu to enter the channel, date and time you wish to record.

**Record using the Info display** – you can use the Info display choose the programmes you wish to record.

Please note: the Digital TV Recorder will add a further three minutes to the recording (unless another recording follows immediately after) in case the Programme being recorded overruns slightly.

## Instant Record

---

To record a programme that you're watching or that is about to start:

- Press the [● RECORD] button. The Instant Recording menu is displayed and the recording starts.
- While the Instant Recording menu is displayed press the [● RECORD] button to set subsequent programmes to record.

**Please note: while recording, you can change channels but it is not possible to pause or rewind live TV.**

**To stop/cancel a recording:**

- Press the stop [■ STOP] button and follow the on-screen instructions.

While recording it is also possible to watch a previously recorded programme.

**To watch a recorded programme:**

- Press the [LIB] button to display the Library.
- Select the programme you wish to watch.
- To start playback from the last played position press the [▶] button.
- To start playback from a specific position press the [OK] button and follow the on-screen instructions.

## Record using the Electronic Programme Guide

The easiest way to schedule a recording is by using the Electronic Programme Guide. This lets you review 8 days of programmes and quickly choose the ones you wish to record.

### Record using the Electronic Programme Guide:

- Press [EPG] to open the Electronic Programme Guide.
- Press [▲], [▼], [◆] or [▶] to highlight the programme you wish to record.
- Press [● RECORD].

**If a programme you want to record is, for example, broadcast either side of the news, you must set the Electronic Programme Guide to record after the break too.**

The chosen programme will be highlighted in red and will be added to your Timer list.

The Digital TV Recorder will start recording 1 minute earlier and stop recording 3 minutes later to avoid missing any of the programme. These times can be adjusted in the menu system - please refer to DVR Settings on page 24.

For full details on the Electronic Programme Guide please refer to page 12.

## Record using the Manual Timer

You can set the Digital TV Recorder to record any channel at any time.

### Record using the the Manual Timer:

- Press [TIMER] to open the Timers screen.
- Press [YELLOW] to open the Add new timer screen.
- Press [▲], [▼], [◆], [▶] and [0-9] to select and set the Channel, Start time/date, End time/date, Repeat, Change/Delete and Playback settings.
- Press [GREEN] to save the timer.

## Record using the Info display

You can set the Digital TV Recorder to record a programme using the Info display.

- Press [INFO] to open the Info display.
- To see information on future programmes, press [▶].
- To change the channel you want information for press [▲] or [▼].
- To record the selected programme press [● RECORD].
- To exit the Info display press [INFO] or [BACK].

## Watch a recording

### Recorded Programmes List:

Your Digital TV Recorder keeps a list of your recordings. It contains information about each programme, its duration and when it was recorded.

### To watch a previously recorded programme:

- To open the Library list, press the [LIB] button.
- Press [▲, ▼] until the recording you wish to watch is highlighted. Press [◀, ▶] to view additional pages of recordings (if available).
- To start playback from the last played position press the [▶] button.
- To start playback from a specific position press the [OK] button and follow the on-screen instructions.

### Fast-forward [▶▶] through a recording:

While watching a recording, you can fast-forward through the programme.

### To fast-forward:

- Press fast-forward [▶▶].
- Press fast-forward [▶▶] again to step up through the fast-forward speeds.
- Slow down the speed of fast-forward playback by pressing the rewind [◀◀] button.
- Fast-forward will continue until you press play [▶], pause [||] or stop [■ STOP] or until you reach the end of the recording, when it will stop and the Digital TV Recorder will return to the last channel viewed.

### Rewind [◀◀] through a recording:

While watching a recording, you can rewind through the programme.

### To rewind:

- Press rewind [◀◀].
- Press rewind [◀◀] again to step up through the rewind speeds.
- Slow down the speed of rewind playback by pressing the fast-forward [▶▶] button.
- Rewind will continue until you press play [▶], pause [||] or stop [■ STOP] or until you reach the beginning of the recording, when it will pause.

### Pause playback:

- To pause a recording playback press pause [||]. You may then press play [▶] to resume playback, or choose one of the other playback options: fast-forward, rewind or stop.

### Stop playback:

- To stop a recording playback press stop [■ STOP], then follow the on-screen instructions.

When watching a recording, press [INFO] to view information about the recorded programme.

## Timeshifting

---

Time-shifting, also known as Pause live TV, lets you pause a broadcast programme and continue watching it later. The maximum length of time you can pause is 2 hours.

### Pause live TV:

- While watching TV, Press pause [■].

This will freeze the picture and sound. The Time-shifting banner will be displayed, indicating how long the programme has been paused.

### Resume watching a time-shifted programme:

- Press play [▶].

The paused programme will begin playing from the point of pausing.

### Fast-forward through time-shifted TV:

While watching a time-shifted programme, you can fast-forward it.

#### To fast-forward:

- Press fast-forward [⏮].
- Press fast-forward [⏮] again to step up through the fast-forward speeds.
- Slow down the speed of fast-forward playback by pressing rewind [⏪].
- Fast-forward will continue until you press play [▶], pause [■] or stop [■ STOP] or until you reach the end of the time-shifted TV, when it will stop time shifting and return to live TV.

### Rewind through time-shifted TV

While watching a time-shifted programme you can rewind it.

#### To rewind:

- Press rewind [⏮].
- Press rewind [⏮] again to step up through the rewind speeds.
- Slow down the speed of rewind playback by pressing fast-forward [⏮].
- Rewind will continue until you press play [▶], pause [■] or stop [■ STOP] or until you reach the beginning of the recording, when it will start to playback the time-shifted TV.

### Pause playback

#### To pause Time-shift TV:

- Press pause [■]. You may then press [▶] to resume playback, or choose one of the other playback options: fast-forward, rewind, or stop.

### Slow-motion

#### To watch Time-shift TV in slow-motion:

- Press pause [■].
- Press [⏮] to watch in slow-motion
- Slow-motion will continue until you press play [▶], pause [■] or stop [■ STOP].

#### Stop Time-shifting:

- Press [■ STOP].

## The menu system

The menu system lets you choose and change a wide range of your Digital TV Recorder's features.

### To view the menu:

- Press the [MENU] button.

### The menu system is split into several sub menus:

- Edit Channel List - lets you rearrange the channel order and hide unwanted channels.
- Settings - lets you choose and change general settings such as picture mode and subtitle language.
- DVR Settings - lets you choose and change recording settings such as starting and ending recordings early.
- Parental Control - lets you set a PIN and lock channels.
- Tuning - lets you tune in new channels.
- Service - lets you view the software and hardware versions running on your Digital TV Recorder and check the strength of your TV signal.
- Software Upgrade - lets you check if a new software version is available. As updates are handled automatically by your Digital TV Recorder it is not recommended that you use this option.

### To exit the menu:

- Press the [MENU] button.

## Edit Channel List

The Edit Channel List sub menu contains the following options:

- Hide Channels - lets you rearrange the channel order.
- Sort Channels - lets you hide unwanted channels.

### To hide unwanted channels:

- Press [MENU] to open the Main Menu.
- Press [OK] to open the Edit Channel List sub menu.
- Press [OK] to select Hide Channels.
- Press [▲] or [▼] to highlight the channel you wish to hide.
- Press [OK] to hide the channel. A \*\* is displayed to show that the channel is hidden.


Hidden channels do not appear in the Electronic Programme Guide, Now and Next information and Channel List. Hidden channels do not appear when changing channels with the [CH.+] and [CH.-] buttons but are still available by selecting the channel number with the [0-9] buttons.

### To show a hidden channel:

- Press [MENU] to open the Main Menu.
- Press [OK] to open the Edit Channel List sub menu.
- Press [OK] to select Hide Channels.
- Press [▲] or [▼] to highlight the hidden channel you wish to show.
- Press [OK] to show the channel. The \*\* is removed.

## Edit Channel List - continued

### To rearrange the channel order:

- Press [MENU] to open the Main Menu.
- Press [OK] to open the Edit Channel List sub menu.
- Press [↕] to highlight Sort Channels.
- Press [OK] to select Sort Channels.
- Press [↕] or [↕] to highlight the channel you wish to move.
- Press [OK] to select the channel. A  is displayed to show that the channel is selected.
- Press [↕] or [↕] to highlight the new position for the selected channel.
- Press [OK] to swap the channels.

## Settings

The Setting sub menu contains the following options:

- **Language** - lets you choose the menu's language.
- **Country** - lets you choose the country in which you are using the Digital TV Recorder. This enables the Digital TV Recorder to display Teletext correctly.
- **Subtitle** - lets you choose the preferred subtitle language.
- **Audio** - lets you choose the preferred audio language for bilingual broadcasts.
- **TV Out** - lets you choose the type of picture to send to the TV.
- **Picture Mode** - lets you choose whether to send widescreen or 4:3 pictures to the TV.
- **Picture Format** - lets you choose how the Digital TV Recorder displays widescreen pictures on 4:3 TV.
- **Reset** - lets you reset the Digital TV Recorder to the factory default settings.

### To choose the menu language (if available):

- Press [MENU] to open the Main Menu.
- Press [↕] to highlight Settings.
- Press [OK] to open the Settings sub menu.
- With Language highlighted, press [↕] or [↕] to select the required language.

## Settings - continued

---

### To choose the country (if available):

- Press [MENU] to open the Main Menu.
- Press [↓] to highlight Settings.
- Press [OK] to open the Settings sub menu.
- Press [↓] to highlight Country.
- Press [←] or [→] to select the required country.

### To choose the subtitle language (if available):

- Press [MENU] to open the Main Menu.
- Press [↓] to highlight Settings.
- Press [OK] to open the Settings sub menu.
- Press [↓] to highlight Subtitle.
- Press [←] or [→] to select the required language.

### To choose the audio language (if available):

- Press [MENU] to open the Main Menu.
- Press [↓] to highlight Settings.
- Press [OK] to open the Settings sub menu.
- Press [↓] to highlight Audio.
- Press [←] or [→] to select the required language.

### To choose the type of picture to send to the TV:

- Press [MENU] to open the Main Menu.
- Press [↓] to highlight Settings.
- Press [OK] to open the Settings sub menu.
- Press [↓] to highlight TV Out.
- Press [←] or [→] to select the required setting.

### To choose widescreen or 4:3 pictures:

- Press [MENU] to open the Main Menu.
- Press [↓] to highlight Settings.
- Press [OK] to open the Settings sub menu.
- Press [↓] to highlight Picture Mode.
- Press [←] or [→] to select the required setting.

### To choose how widescreen pictures are displayed on a 4:3 TV:

- Press [MENU] to open the Main Menu.
- Press [↓] to highlight Settings.
- Press [OK] to open the Settings sub menu.
- Press [↓] to highlight Picture Format.
- Press [←] or [→] to select the required setting.

Setting Picture Format to Normal fills the TV screen but some of the widescreen picture is lost. Setting Picture Format to Letterbox displays all of the picture with black bars visible.

## Settings - continued

---

### To reset the Digital TV Recorder to the factory default settings:

- Press [MENU] to open the Main Menu.
- Press [↵] to highlight Settings.
- Press [OK] to open the Settings sub menu.
- Press [↵] to highlight Reset.
- Press [OK] and follow the on-screen instructions.

## DVR Settings

---

The DVR Setting sub menu contains the following options:

- **Start Recordings** - lets you choose whether recordings are started earlier than the actual start time to avoid missing the start of a programme.
- **End Recordings** - lets you choose whether recordings are stopped later than the actual end time to avoid missing the end of a programme.
- **Pause Buffer Size** - lets you choose the length of time that a programme can be paused for and how far back you can rewind live TV.
- **Auto Delete** - lets you choose whether the Digital TV Recorder can automatically delete old recordings based on their size or if they have been watched. Programmes will only be deleted when there is not enough hard disk space available for new recordings.
- **Format Disk** - lets you delete all recordings stored on the hard disk.

### To set recordings to start early:

- Press [MENU] to open the Main Menu.
- Press [↵] to highlight DVR Settings.
- Press [OK] to open the DVR Settings sub menu.
- With Start Recordings highlighted, press [←] or [→] to select the required setting.



## DVR Settings - continued

---

### To set recordings to end late:

- Press [MENU] to open the Main Menu.
- Press [↓] to highlight DVR Settings.
- Press [OK] to open the DVR Settings sub menu.
- Press [↓] to highlight End Recordings.
- Press [←] or [→] to select the required setting.

### To set the pause buffer size:

- Press [MENU] to open the Main Menu.
- Press [↓] to highlight DVR Settings.
- Press [OK] to open the DVR Settings sub menu.
- Press [↓] to highlight Pause Buffer Size.
- Press [←] or [→] to select the required setting.

### To set the Digital TV Recorder to automatically delete old recordings:

- Press [MENU] to open the Main Menu.
- Press [↓] to highlight DVR Settings.
- Press [OK] to open the DVR Settings sub menu.
- Press [↓] to highlight Auto Delete.
- Press [←] or [→] to select the required setting.

### To format the hard disk and delete all recordings:

- Press [MENU] to open the Main Menu.
- Press [↓] to highlight DVR Settings.
- Press [OK] to open the DVR Settings sub menu.
- Press [↓] to highlight Format Disk.
- Press [OK] and follow the on-screen instructions.

Programmes will only be automatically deleted when there is not enough hard disk space available for new recordings.

## Parental Control

---

The Parental Control sub menu contains the following options:

- **Set PIN** - lets you choose a new PIN. The default PIN is 0000.
- **Lock Channels** - lets you lock channels so they can only be viewed once the correct PIN is entered.

### To set a new PIN:

- Press [MENU] to open the Main Menu.
- Press [▼] to highlight Parental Control.
- Press [OK].
- Enter the current PIN using the [0-9] buttons.
- Press [OK] to select Set PIN.
- Enter and re-enter the new PIN using the [0-9] buttons.

### To lock a channel:

- Press [MENU] to open the Main Menu.
- Press [▼] to highlight Parental Control.
- Press [OK].
- Enter the current PIN using the [0-9] buttons.
- Press [▼] to highlight Lock Channels.
- Press [OK] to select Lock Channels.
- Press [▲] or [▼] to highlight the channel you wish to lock.
- Press [OK] to lock the channel. A \*\* is displayed to show that the channel is locked.

### To unlock a channel:

- Press [MENU] to open the Main Menu.
- Press [▼] to highlight Parental Control.
- Press [OK].
- Enter the current PIN using the [0-9] buttons.
- Press [▼] to highlight Lock Channels.
- Press [OK] to select Lock Channels.
- Press [▲] or [▼] to highlight the channel you wish to unlock.
- Press [OK] to unlock the channel. The \*\* removed.

## Tuning

The Tuning sub menu contains the following options:

- **Automatic Search** - lets you automatically tune the Digital TV Recorder to search for any new channels that may have been launched.
- **Manual Search** - lets you manually tune the Digital TV Recorder to search for any new channels that may have been launched.

### To automatically tune the Digital TV Recorder:

- Press [MENU] to open the Main Menu.
- Press [↵] to highlight Tuning.
- Press [OK].
- Enter the current PIN using the [0-9] buttons.
- Press [OK] to select Automatic Search.
- Press [OK] and follow the on-screen instructions.

### To manually tune the Digital TV Recorder:

- Press [MENU] to open the Main Menu.
- Press [↵] to highlight Tuning.
- Press [OK].
- Enter the current PIN using the [0-9] buttons.
- Press [↵] to highlight Manual Search.
- Press [OK] to select Manual Search.
- Enter the channel frequency using the [0-9] buttons. A list of the channels found is displayed. These channels are automatically stored. Press [OK]

## Service

The Service sub menu contains the following options:

- **Manufacturers Details** - lets you view the software and hardware versions running on your Digital TV Recorder.
- **Signal Strength** - lets you check the strength of your TV signal.

### To view the software and hardware versions:

- Press [MENU] to open the Main Menu.
- Press [↵] to highlight Service.
- Press [OK] to open the Service sub menu.
- Press [OK] to select Manufacturers Details.

### To view the signal strength:

- Press [MENU] to open the Main Menu.
- Press [↵] to highlight Service.
- Press [OK] to open the Service sub menu.
- Press [↵] to highlight Signal Strength.
- Press [OK] to select Signal Strength.

## Software Upgrade

The Software Upgrade sub menu lets you check if a new software version is available. As updates are handled automatically by your Digital TV Recorder it is not recommended that you use this option.

## Using Interactive TV and Teletext

Your Digital TV Recorder gives you full access to Interactive TV and Teletext.

Teletext is available on certain channels, and there is a dedicated Teletext channel - see your TV Guide for more information.

- To see the Teletext service on the channel you are watching, press [TEXT].

Interactive TV lets you interact with some TV programmes and channels. When a programme is interactive, you will normally see the Press Red symbol on your TV screen.

- To access Interactive TV, press [RED] on your remote control.
- To use the service, you will need to use the colour buttons on your remote. See on-screen instructions for which buttons to press.

## Programming the remote control

Your Digital TV Recorder's remote control can be programmed to operate certain TVs and DVDs players.

- Find the 4 digit code for brand of TV or DVD player from the code list at the back of this instruction book.

If your brand is not included in the list or the codes for your brand do not operate your equipment, refer to the following page for an alternative method of programming the remote control.

- **If you want to programme the remote control to operate a TV:**  
Press [TV] on the remote control.

**If you want to programme the remote control to operate a DVD player:**

Press [DVD] on the remote control.

- Press and hold [⏻] for about 3 seconds. The [TV]/[DVD] button flashes twice.
- Enter your brand's 4 digit code using the [0-9] buttons. The [TV]/[DVD] button flashes when every digit of the code is entered. If a valid code has been entered the [TV]/[DVD] button flashes once quickly.
- Check that the remote control operates your TV/DVD player by pressing the standby [⏻] button. If the remote control does not operate your TV/DVD player, repeat the above procedure and try another code for your brand.

The codes you enter may be lost if weak batteries are not replaced immediately. Even if your TV/DVD player is listed in the code list, in some instances it may not be possible to operate all of the available functions.

There is a label inside the remote control's battery compartment where you can record your brand codes.

## Programming the remote control continued

If your TV or DVD brand is not included in the code list or the brand codes in the list do not operate your equipment it may still be possible to programme the remote control to operate your equipment.

- **If you want to programme the remote control to operate a TV:**  
Press [TV] on the remote control.

**If you want to programme the remote control to operate a DVD player:**

Press [DVD] on the remote control.

- Press and hold [↺] for about 3 seconds. The [TV]/[DVD] button flashes twice.
- Enter the code '991' using the [1] and [9] buttons. The [TV]/[DVD] button flashes when every digit of the code is entered. If the code has been entered correctly the [TV]/[DVD] button flashes once quickly.
- Press the [⏻] button and note whether the remote control switches off your TV/DVD player.

**If the remote control switches off your TV/DVD player:**

The remote control has found your code. Press [↺] on the remote control to save.

**If the remote control does not switch off your TV/DVD player:**

Press [CH. +] repeatedly until the remote control switches off your TV/DVD player. The remote control has now found your code. Press [↺] on the remote control to save.

## Finding the remote control's current codes

If you have used the procedure on the left to programme the remote control to operate your TV or DVD, it may be useful to know the correct code for your equipment.

Knowing the codes that operate your equipment will allow you to re-programme the remote control quickly using the procedure on page 28, should the need arise.

There is a label inside the remote control's battery compartment where you can record your brand codes.

- **If you want to find out the current TV code:**

Press [TV] on the remote control.

**If you want to find out the current DVD code:**

Press [DVD] on the remote control.

- Press and hold [↺] for about 3 seconds. The [TV]/[DVD] button flashes twice.
- Enter the code '990' using the [0] and [9] buttons. The [TV]/[DVD] button flashes when every digit of the code is entered. If the code has been entered correctly the [TV]/[DVD] button flashes once quickly.
- Press [1] and count the number of times the [TV]/[DVD] button flashes. The number of flashes is the first number of the code.
- Press [2] and count the number of times the [TV]/[DVD] button flashes. The number of flashes is the second number of the code.
- Press [3] and count the number of times the [TV]/[DVD] button flashes. The number of flashes is the third number of the code.
- Press [4] and count the number of times the [TV]/[DVD] button flashes. The number of flashes is the fourth number of the code.

## Controlling a TV and DVD player

### Controlling a TV

Before attempting to control a TV, ensure that the remote control has been programmed (refer to page 28).

- Press the [TV] button.
- Use the buttons in the table opposite to operate your TV.

When you have finished controlling your TV, press the [DTV] button to allow the remote control to operate your Digital TV Recorder again.

### Controlling a DVD player

Before attempting to control a DVD player, ensure that the remote control has been programmed (refer to page 28).

- Press the [DVD] button.
- Use the buttons in the table opposite to operate your DVD player.

When you have finished controlling your DVD player, press the [DTV] button to allow the remote control to operate your Digital TV Recorder again.

Button	Function in TV Mode	Function in DVD Mode
[⏏]	Mutes the TV	- No function -
[⏻]	Switches the TV on/off	Switches the DVD player on/off
[VOL. +]/[VOL. -]	Adjusts the volume	- No function -
[CH. +]/[CH. -]	Selects the next/previous channel	- No function -
[↶]/[↷]/[↶]/[↷]	- No function -	Navigates menus
[OK]	- No function -	Makes a selection in menus
[■ STOP]	- No function -	Stops playback
[◀◀]	- No function -	Rewind
[▶▶]	- No function -	Play
[⏸]	- No function -	Pause
[▶▶]	- No function -	Fast Forward
[0-9]	Selects channels	- No function -
[SUB/AV]	Selects the Video Input	- No function -
[TEXT/--]	Selects double digit channels	- No function -

## General Problem Solving

.....

**Should you experience a problem with your Digital TV Recorder which can't be resolved using the table below, put the unit into Standby mode, then unplug completely from the mains. Leave the unit unplugged for at least one minute before connecting again to the mains.**

Problem	Possible cause/remedy
No picture/distorted picture...	<ul style="list-style-type: none"><li>• Check the Digital TV Recorder is switched on.</li><li>• Check the aerial is correctly connected to the Digital TV Recorder.</li><li>• Check all connections between the Digital TV Recorder and the TV.</li><li>• Check the TV is displaying the correct AV input (refer to your TV manual).</li><li>• Check the signal strength (refer to 'To view the signal strength' on page 27).</li></ul>
Black and white picture...	<ul style="list-style-type: none"><li>• Digital TV Recorder is set to output Y/C pictures and your TV does not support Y/C. Change the 'TV Out' setting (refer to 'To choose the type of picture to send to the TV' on page 23).</li></ul>
No sound...	<ul style="list-style-type: none"><li>• Check the TV is not muted.</li><li>• Check the TV volume is turned up.</li><li>• Check the aerial is connected correctly and the Digital TV Recorder is switched on.</li><li>• Check all connections between the Digital TV Recorder and TV/Hi-Fi or Surround Sound System.</li></ul>
No power...	<ul style="list-style-type: none"><li>• Check the power supply is correctly connected and the Digital TV Recorder is switched on.</li></ul>
Digital TV Recorder does not work...	<ul style="list-style-type: none"><li>• Check the remote control is in DTV mode.</li></ul>
Digital TV Recorder takes a long time to switch on...	<ul style="list-style-type: none"><li>• The Hard Disk is nearly full. Delete some recordings.</li></ul>
Remote control does not work...	<ul style="list-style-type: none"><li>• Check the remote control mode (for example, when trying to operate the Digital TV Recorder, press the [DTV] button on the remote control and retry).</li><li>• If the remote control does not operate the TV/DVD player, even when the remote control has been set to the correct mode, re-programme the remote control (refer to 'Programming the remote control' on page 28).</li><li>• Replace the batteries.</li></ul>
Digital TV Recorder does not record...	<ul style="list-style-type: none"><li>• Format the Hard Disk. Please note that this should only be done as a last resort as formatting the Hard Disk will permanently delete all recordings.</li></ul>

## Helpline details

If you have any problems using your Digital TV Recorder and cannot find the solution in this user guide.

For general problems contact the Digital Helpline:

- Please contact our Digital Helpline on 0870 010 0484. Lines open Monday to Friday 8:30am to 8:00pm, Saturday 9am to 6pm, Sunday 9am to 5:30pm (calls charged at the national rate.)

If possible, when calling, you should be close to your TV and have your Digital TV Recorder and TV switched on.

For general Freeview reception enquiries:

- Freeview: 0870 880 9980 or [www.freeview.co.uk](http://www.freeview.co.uk) (calls charged at the national rate.)
- Digital TV Group: [www.dtg.org.uk](http://www.dtg.org.uk)

Please refer to the product specification for further details on power requirements, etc. This product is for indoor use only.



Partmaster Direct can provide accessories, spares, batteries and replacement parts with Next Day Delivery available upon request.

Please call: **0870 600 1338** (calls charged at National Rate), or visit our website at [www.partmaster.co.uk](http://www.partmaster.co.uk)

## Product technical specifications

### Physical Specifications

Size:	(W) 184mm x (H) 70mm x (D) 227mm
Weight:	1.85 kg

### Power Requirements

Input Voltage:	12V DC $\pm 10\%$ (with supplied power supply)
Power Consumption (On):	14W Typical (25W Max)
Power Consumption (STBY):	<3W
Operating Temperature:	+10°C to +40°C
Storage Temperature:	-20°C to +60°C

### Twin Tuners

RF Input / Output Connectors:	1x IEC (Female) / 1x IEC (Male)
Channel Coverage:	UHF (B21 to B68 / 470MHz to 860MHz)

### Video Decoder

Video Decoding:	MPEG-2 Main Level / Main Profile
Video Formats:	16:9 / 4:3
Video Outputs:	RGB / Y/C / CVBS

### Audio Decoder

Audio Decoding:	MPEG-2 Layer 1
Audio Mode:	Stereo / Mono

### AV Connectors

Video:	2x 21 Pin SCART (TV SCART = RGB / Y/C, VCR SCART = CVBS)
Audio:	1x 3.5mm Jack/miniTOS (Analogue Stereo / PCM Audio Optical SPDIF)

### Supplied Accessories

Universal Remote Control	Power Supply (12V 2Amp)
2x AA / R06 Batteries	SCART Lead
Instruction Manual	Quick Start Guide
Stand	RF Lead
4 Rubber Feet	

Due to continued product improvement, this specification may change without notice.

All information correct at time of going to press.



## Important care and safety advice

---

This Digital TV Recorder has been manufactured to meet international safety standards, but you must take care to operate it safely.

**It is important that you read these safety instructions.** If you have any doubts about the installation, operation or safety of this Digital TV Recorder, please contact us.

### Electrical warning:

- Your Digital TV Recorder contains a high voltage which is sufficient to cause a dangerous electric shock.
- Never remove the cover. There are no user-serviceable parts inside.
- Only use the power cable supplied (or manufacturer's replacement) with your Digital TV Recorder.
- Switch off the power supply from the mains wall socket before you disconnect any equipment from the Digital TV Recorder.
- Never push anything into holes, slots or other openings in the case.

### Positioning the Box:

- The Digital TV Recorder and cables should be placed so that they are not likely to be walked on or pinched by items placed upon or against them.
- The mains plug must be readily accessible and operable in order to disconnect mains power whenever required.
- Do not expose your Digital TV Recorder to direct sunlight or to extreme temperatures (above 40°C or below -5°C), high moisture levels or dust.
- Condensation may accumulate on the Digital TV Recorder if it is subjected to sudden changes in temperature. In this case, allow the Digital TV Recorder to rest for one hour before use.
- Do not block the ventilation holes of the Digital TV Recorder.
- Allow at least 10 cm on all sides of the Digital TV Recorder (including the top, but excluding the base) for ventilation. Do not place the Digital TV Recorder on top of or underneath other equipment.

- Do not place the Digital TV Recorder on an unstable surface or on a bed, sofa, rug, or similar surface as this may block air ventilation and cause it to overheat. Never place the Digital TV Recorder over a radiator or in an unventilated cabinet.
- Do not expose the Digital TV Recorder to drips or splashes and do not place any objects filled with liquids on the Digital TV Recorder.
- Never place the Digital TV Recorder on top of a loudspeaker as the vibrations and magnetic field may damage the Digital TV Recorder's Hard Disk.

### Cleaning:

- Always disconnect from the mains supply before cleaning. Wipe with a lint-free cloth. Never use detergents, liquid cleaners or aerosol cleaners.

### Unplug when not in use:

- When not in use for an extended period, unplug the Digital TV Recorder from the mains outlet. Do not overload wall outlets and extension adaptors as this can result in a risk of fire or electric shock.

### Use only authorised servicing. If any of the following occur:

- Any of the cables or plugs are damaged.
- Liquid has spilled onto, or objects have fallen into, the Digital TV Recorder.
- The Digital TV Recorder has been dropped or the casing damaged.
- The Digital TV Recorder does not operate normally

Carefully unplug the Digital TV Recorder from the electrical outlet and contact the store where you bought this Digital TV Recorder. Alternatively, contact our Digital Helpline.



This symbol on the product or in the instructions means that your electrical and electronic equipment should be disposed at the end of its life separately from your household waste. There are separate collection systems for recycling in the EU.

For more information, please contact the local authority or your retailer where you purchased the product.

**End User licence:** The hardware and software of this product are licensed to the user as a single product that cannot be separated. It is intended as a domestic product for the purposes of receiving and recording digital television services, any other use is done so at the users risk. In relation to the software the end user is prohibited from copying, transferring to a 3rd party, modifying or otherwise attempting to derive the source code of any part or whole of the software in the product. The software is not sold, but licensed for use in the European Union to the owner of the hardware. New software may be transmitted to the box by the manufacturer in which case the licence transfers to the new software.

TV Brand List			
Brand	Code(s)	Brand	Code(s)
ADL	1247	BPL	0067, 0586, 0312, 0403
AEG	0636, 1193	Brandt	0655, 0139, 0226, 0317, 0365, 0373, 0590, 1395
Aiwa	1938	Brandt Electronique	0317, 0365
Akai	0391, 0238, 0401, 0067, 0463, 0221, 0065, 0039, 0102, 0248, 0744, 0193, 0546, 0745, 0632, 0586, 0578, 0510, 0247, 0661, 0246, 0294, 0208, 0407, 0636, 1067, 1938, 0503, 1289	Brother	0294
Akashi	0039	Bush	0698, 0248, 0193, 0379, 0039, 0066, 0067, 0401, 0265, 0312, 0385, 0393, 0404, 0294, 0391, 1067, 0517, 0238, 0247, 0324, 0586, 0744, 1930, 1938, 0808, 1289
Akura	0067, 0586, 0698, 0442, 0039, 0248, 0312, 0294, 0744, 2012	Canton	0248
Alba	0067, 1067, 0586, 0744, 0039, 0448, 0400, 0265, 0401, 0698, 0385, 0248, 0246, 0277, 0193, 0517, 0066, 1938, 0473, 0581	Carrefour	0066, 0100, 0067, 0586
Amstrad	0207, 0039, 0546, 0294, 0401, 0248, 0067, 0586, 0463, 0442, 0392, 1067	Casio	0067, 0586, 0193, 0379
Astra	0067, 0586	Citizen	0090
Baird	0139, 0373, 0102, 0103, 0247, 0238	Crown	0039, 0742, 0400, 0516, 0067, 0586, 0517, 0744, 0636, 0745, 0403, 0448, 0238, 0369, 1067
Bang & Olufsen	0595, 0117, 0305	Daewoo	0664, 0404, 1939, 0529, 0691, 0067, 0586, 0039, 0246, 0248, 0247, 1167, 1938, 0910
Bauer	0039	Dainichi	0248, 0246
Beko	0744, 0065, 0516, 0400, 0067, 0448, 1067, 0586, 0636, 0745, 0838	Dansai	0067, 0586, 0294, 0065, 0246, 0039, 0066, 0247, 0238
Bestar-Daewoo	0404	Denko	0294
Binatone	0247	Digivision	0391
Blaupunkt	0221, 0565, 0225, 0230, 0357, 0358, 0485, 0200, 0066,	Dunai	0193
Bosch	0350, 0357	Durabrand	0067, 0586

## Remote Control Code List - continued

TV Brand List			
Brand	Code(s)	Brand	Code(s)
Ferguson	0103, 0655, 0317, 0365, 0268, 0139, 05900, 0067, 0586, 0065, 0373, 0134, 0138, 0391, 0578, 0473, 1067	Goodmans	0064, 1289, 1067, 0067, 0529, 0586, 0744, 0698, 1939, 0404, 0066, 0294, 0102, 0546, 0039, 0209, 0517, 0401, 0373, 0265, 0065, 0510, 0590, 0247, 0365, 0248, 1938, 0660, 0691, 1930, 0910, 1338, 0617, 1406
Fidelity	0193, 0542, 0393, 0067, 0586, 0401, 0442, 0561, 0246, 0294, 1938, 0391	Granada	0067, 0586, 0256, 0386, 0075, 0102, 0138, 0238, 0247, 0066, 0369, 0546, 0503, 0365, 0590, 0193, 0393, 0255, 0373, 0578
Finlandia	0238, 0376, 0578, 0391, 0193, 0393, 0102, 0317, 0373, 0075	Grundig	0225, 0538, 0565, 0221, 0100, 0517, 0067, 0473, 0586, 0617, 0039, 0066, 0400, 0770, 1938, 0660, 1253, 1338, 0208, 1406
Finlux	0135, 0134, 0067, 0586, 0744, 0376, 0247, 0102, 0193, 0546, 0745, 0100, 0117, 0209, 0132, 0441, 0661, 0522, 0510, 0503, 0448, 0636	Hauppage	0067, 0586
Fujitsu	0209, 0236, 0102, 0132, 0247, 0193, 0039, 0382, 0713, 0067, 0586, 0391, 0289, 0883	Hinari	0238, 0067, 0586, 0039, 0248, 0066, 0209, 0193, 0385, 0473, 0517, 0265, 0324, 0294, 1938
Fujitsu General	0039, 0247, 0236, 0193	HiSense	1393, 0238
Fujitsu Siemens	1328, 1289	Hitachi	0255, 1255, 0379, 0608, 0066, 0386, 0138, 0503, 0193, 0373, 0226, 0247, 0224, 0546, 0102, 0511, 0529, 0067, 0586, 0139, 0393, 0578, 0664, 0774, 0208, 1167, 0135, 0522, 1511, 0391, 0542, 0510, 0827, 1067, 1606, 1179
Funai	0698, 0209, 0294, 0324, 0333, 0442	Hitachi Fujian	0138, 0255
Galaxis	0400, 0448, 0067, 0132, 0586	HMV	0117
GE	0373, 0765, 0208, 0312, 0590, 0317, 0139, 0365, 0655	Hyundai	0067, 0895, 0586, 1274, 1324, 1311, 1498
GEC	0193, 0391, 0379, 0067, 0546, 0586, 0102, 0247	InFocus	0782, 1194, 1236
Goldstar	0067, 0039, 0400, 0407, 0247, 0208, 0277, 0246, 0586, 0193, 0391, 0139, 0393, 0636, 0744, 0745	ITT	0193, 0510, 0379, 0391, 0503, 0578, 0376, 0369, 0238, 0209, 0640

TV Brand List			
Brand	Code(s)	Brand	Code(s)
ITT Nokia	0391, 0578, 0193, 0503, 0510, 0379, 0376, 0238, 0209, 0369, 0636, 0640, 0661, 0393	Maxam	0294
JVC	0638, 0066, 0713, 0401, 0248, 0636, 0448, 0761, 0123	Maxim	2012
Kathrein	0586, 0067	MEI	1067, 0067, 0586
Kenwood	0135	Memorex	0039, 0208, 0090
Kneissel	0067, 0415, 0400, 0640, 0441, 0404, 0529, 0586, 0465, 0289, 0322, 0268, 0392, 1938	Metz	0418, 0477, 0776, 0397, 0117, 1193, 0225, 0565, 0221, 0067, 0586, 0305, 0617, 0698, 1067
LaSat	0516, 0400	Microstar	0838
Leader	0039	Minerva	0517, 0565, 0225, 0100, 0221, 0546, 0138
LG	0067, 0208, 0400, 0039, 0407, 0247, 0586, 0744, 0246, 0193, 0636, 0139, 0745, 1667, 1176, 1221	Mitsubishi	0138, 0123, 0542, 0067, 0208, 0117, 0066, 0565, 0586, 0238, 1067
Loewe	0542, 0663, 0820, 0067, 0586, 0685, 0400, 0117, 0322, 0581, 0392, 0546	Motorola	0123
Logik	0041, 0090, 0039, 0294, 0401, 0910, 1247	NEC	0200, 0617, 1200, 0066, 0350, 0485, 0039, 0404, 0247, 0067, 0586, 0041, 0734, 0275, 0529, 1734, 0691
Logix	0698	Nikkai	0102, 0248, 0067, 0586, 0247, 0294, 0065, 0246, 0039, 0066
Luxor	0224, 1193, 0393, 0510, 0522, 0379, 0391, 0238, 0386, 0578, 0193, 0376, 0503, 0209, 1067, 0247, 0661	Nokia	0391, 0193, 0510, 0379, 0578, 0522, 0503, 0369, 0238, 0404, 0661, 0636, 0376, 0209, 0350, 0640, 0139, 0581
Marantz	00647, 0586, 0442	Nordic	0247
		Orion	0067, 0209, 0473, 0385, 0586, 0685, 0744, 0265, 0324, 0207, 0350, 0041, 0039, 0351, 0132, 0294, 0442, 0546, 0561, 1938, 0910, 1226
Matsui	0067, 0586, 0517, 0039, 0265, 0207, 0041, 0385, 0102, 0066, 0247, 0324, 0401, 0463, 0473, 0393, 0485, 0193, 0379, 0546, 0065, 0238, 0075, 0225, 0221, 0365, 0744, 1938, 1067	Pace	1938
Matsushita	0680	Pacific	0067, 0586, 1167, 0744, 1067, 0473

## Remote Control Code List - continued

TV Brand List			
Brand	Code(s)	Brand	Code(s)
Panasonic	0680, 1680, 0138, 0256, 0391, 0397, 0546, 0067, 0586, 0193, 0578, 1340, 0883	Roadstar	1067, 0039, 0448, 0067, 0586, 0744, 0698, 0248, 0294, 0312, 1219
Philco	0117, 0114, 0104, 0448, 0277, 0193, 0400, 0067, 0586	Saba	0655, 0139, 0590, 0373, 0317, 0117, 0193, 0546, 0391, 0528, 0226, 0365, 0578, 0744
Philips	0586, 0067, 0268, 0221, 0117, 0373, 0404, 0802, 0039, 0230	Sagem	0640, 0485, 0312, 0860, 1343
Pioneer	0790, 0041, 0196, 0067, 0200, 0586, 1290, 0400, 0373, 0391, 0139, 0193, 0317, 0516, 0542	Saisho	0265, 0546, 0207, 0039, 0041, 0247, 0193, 0294
Premier	0039, 0294	Salora	0024, 0379, 0193, 0386, 0391, 0546, 0393, 0403, 0578, 0369, 0238, 0510
Proline	0067, 0586, 0655, 0664, 0660, 0441, 0351, 0102, 1406	Samsung	0648, 0617, 0067, 0208, 0586, 1279, 0123, 0674, 1265, 0039, 0247, 0512, 0400, 0090, 0294, 0246, 0102, 0238, 0712, 0193, 0655
Prosonic	0067, 0586, 0400, 0404, 0401, 0698, 0744, 0246, 0247	Sanyo	0238, 1238, 0187, 0322, 0066, 0041, 0400, 0369, 0102, 0246, 0247, 0134, 0075, 0585, 0039, 0193, 0403, 0067, 0138, 0586, 0516, 0765, 0200, 0734
Protech	0067, 0586, 0247, 0039, 0277, 0379, 0132, 0294, 0448, 0698, 0312, 0193, 0516, 1067	SEG	0067, 0586, 1067, 0698, 0247, 0517, 0039, 0379, 0193, 0294, 0664, 0066, 0132, 0277, 0392, 0246, 0248, 1939, 1193
Pye	0067, 0586, 0017, 0404, 0379, 0442	Seleco	0236, 0393, 0289, 0392, 0193, 0441, 0581, 0401, 0066, 0294, 0376, 0465
RadioShack	0067, 0586, 0208	Serino	0640, 0485, 0246, 0123
Rank	0100	Sharp	0123, 1223, 0187, 0066, 0324, 0521, 0683, 0546, 0230, 0790, 1423, 1193
RCA	0655, 0123, 0590, 0365, 0373	Siemens	0221, 0565, 0230, 0225, 0357, 0358, 0187, 0067, 0586, 0391
Rediffusion	0391, 0578, 0066, 0376	Sky	0067, 0312, 0910, 02080, 0586
Redstar	0067, 0586	Sony	1535, 1681, 1040, 0041, 1781, 0383, 0066, 0132, 0067, 0586, 0187
Relisys	0895, 0907, 1236, 1237, 1328	Sound & Vision	0132, 0248, 0404, 0067, 0586
Ricoh	0067, 0586	Ssangyong	0039

TV Brand List			
Brand	Code(s)	Brand	Code(s)
Strong	1193, 1179, 1067, 0067, 0586	Thorn-Ferguson	0134, 0138, 0139, 0268, 0391, 0365, 0529, 0103, 0065
Tandberg	0397, 0441, 0139, 0226, 0392, 0391, 0193	Tiny	1226, 1299
Tandy	0248, 0102, 0247, 0277, 0123, 0193	Toshiba	0538, 0090, 1538, 0065, 1319, 0066, 0100, 0132, 0744, 0271, 0247, 0139, 0225, 0221, 0648, 1938, 0039, 0067, 1194, 1193
Tatung	0067, 0586, 0102, 0546, 0247, 0041, 1938, 1401, 1289	Trident	0546, 0247
Teac	0542, 0067, 1067, 0586, 0742, 0698, 0485, 0247, 0294, 1939, 0208, 0039, 0442, 0379, 0312, 0448, 0200, 0744, 1179, 1785	Tristar	0294, 0248
TEC	0247, 0039, 0277, 0365, 0289, 0067, 0586, 0391, 0193	Triumph	0207, 0546, 0376, 0586, 0067
TechniSat	0685, 0037, 0586, 0193	Universal	0067, 0586
Techwood	1193	Vestel	0067, 0193, 0247, 0586, 0698, 1067, 1193
Teknika	0090, 0209	Vision	0067, 0294, 0586, 0350, 0247
Telecor	0067, 0586, 0193, 0248, 0247, 0289, 0424	Waltham	0247, 0386, 0448, 0317, 0415, 0067, 0586, 0698, 0139, 1067
Telefunken	0655, 0590, 0104, 0617, 0139, 0373, 0742, 0528, 0317, 0114, 0131, 0365, 0103, 0226, 0067, 0586, 0516, 0744	Watson	0067, 0586, 0350, 0193, 0248, 0424, 0039, 0698, 1067, 1938
Tensai	0134, 0248, 0067, 0586, 0247, 0324, 0350, 0039, 0135	Wega	0067, 0586, 0066, 0117
Tevion	1289, 1328, 0067, 0586, 0698, 1167, 0744, 1067, 1278, 1319	Weston	0067, 0586
Thomson	0655, 0590, 0373, 0317, 0139, 0365, 0226, 0067, 0586, 0379	Wharfedale	0067, 0586
Thorn	0138, 0139, 0103, 0255, 0373, 0391, 0268, 1535, 1040, 0104, 0114, 0529, 0565, 0067, 0102, 0586, 0041, 0134, 0365, 0542, 0066, 0075, 0404, 0065, 0100, 0131, 0386	Yamaha	0680, 0827
		Zanussi	0236, 0393, 0247

## Remote Control Code List - continued

DVD Brand List			
Brand	Code(s)	Brand	Code(s)
Acoustic Solutions	0760, 0743, 1272	Grundig	0725, 0805, 0569, 0681, 0735, 0820, 0743, 0700, 0753, 1725, 2076, 1034, 1760, 1950, 1466, 1513
AEG	0818, 0800, 0820, 1464	Harman/ Kardon	0732
Aiwa	0671, 0725, 0899, 0563	Hitachi	0694, 0809, 1950, 2024, 0695, 0603, 0887, 0743
Akai	0820, 0809, 0818, 1145, 0928, 0796, 0746, 0914, 0743, 0882, 0735, 1119, 1725, 1263	Hyundai	0813, 0880, 1186, 0796, 1258, 2076
AKI	0883	JBL	0732
Alba	0747, 0729, 0743, 0753, 0725, 0760, 0813, 0569, 0702, 1170, 1081, 1560, 1725	JVC	0653, 0588, 1931, 1970, 1194, 0569, 0533, 0897, 1271
Amstrad	0743, 1145	Kenwood	0564, 0520
Binatone	1953	Kiss	0871, 1553, 0695
Blaupunkt	0747	Koss	0681
Brandt	0681, 0581, 0533	LG	0771, 0621, 1936, 0899, 2032
Bush	0743, 0725, 0863, 1725, 0760, 0861, 0729, 0747, 0808, 0848, 0909, 0914, 0753, 1195, 1466, 1449, 1513	LiteOn	1088, 1486, 1188, 1446
Daewoo	0862, 0863, 1513, 0735, 0800, 0744, 1948, 1466, 0902, 1171, 1471, 0808	Loewe	0569, 0771
Dansai	0800, 0813, 1145, 1725	Luxor	1034, 0743, 1760, 0760, 1275
Denon	0520, 0664, 1664	Marantz	0569
DMTECH	0813, 0820, 2076, 1301	Matsui	0681, 0743, 0702, 0725, 0914, 1760
Durabrand	0861	Maxim	0743, 1272, 1397
Eltax	0796, 1351	Medion	0861, 0813, 1377, 0681, 0746, 1375, 0909, 0660, 2042, 1120, 1195
Ferguson	0681, 1760, 0928	Memorex	0861
Finlux	0771, 0800, 0813, 0621, 0702, 0781, 1177, 1195	MiCO	0753, 0781, 1251, 1253, 1209, 1284
Funai	0725, 0705	Microsoft	0552
GE	0747	Microstar	0861
Goldstar	0621, 0771	Minerva	0735
Goodmans	0743, 1034, 0753, 0791, 0813, 0760, 0681, 0820, 0848	Mitsubishi	0743

DVD Brand List			
Brand	Code(s)	Brand	Code(s)
NAD	0771	Sony	0563, 1663, 2011, 1100, 2050, 1933, 0802, 1964, 0603, 2073, 1897, 1854
NEC	0899, 0621, 1948	Strong	0743
Nikkai	1953	Tandberg	0743, 1725
Omni	0729, 0808, 0863, 1134, 1258	Tatung	0800
Orbit	0902	Teac	0747, 0771, 0601, 0798, 0621, 0789, 0820, 0863, 1257, 1195
Orion	0725, 1158, 1725, 1263, 1449	TEC	0928
Pacific	0798, 0820, 0789, 0834, 0743, 0861	Technics	0520, 1935, 1937, 1938
Panasonic	0520, 1938, 1935, 1864, 1937	Technika	0800, 1145, 0861, 1195
Philips	0569, 0676, 0915, 0705, 0533, 1842, 1843, 1848, 1188	Telefunken	0820, 0819, 0818, 1258
Pioneer	0601, 1995, 0661, 0555, 1930, 1601, 1490	Thomson	0581, 0552
Prism	1183, 0861	Tiny	1519
Proline	0681, 0702, 0820, 1034, 1513, 0863, 1945	Toshiba	0533, 1075, 1540, 2036
Pye	0676	Trio	0800
RCA	0552, 0681	Umax	1181
Roadstar	0729, 0743, 0848, 0760, 1081, 0928, 0863, 2044	Universal Multimedia	0798
Samsung	0603, 0774, 1962, 0850, 1105, 2038, 0520	Vestel	0743, 2024, 1560
Sanyo	0700, 0725, 0820, 0903, 0743	Waltham	1560
Schneider	0813, 0861, 0809, 0735, 0834, 0818, 0743, 0681, 0820, 1183, 1397	Wharfedale	0798, 0753, 0781, 0782
Sharp	0660, 0782, 0743, 0725, 2045, 1286, 1449, 2054	XBox	0552
Sherwood	0747, 0771	Yamada	1034, 0902, 1181, 1446, 1086, 1519, 1188
Skyworth	0928, 0796	Yamaha	0569, 0676, 0520

.....

.....

