

# Re-tuning: MATSUI DTR3 Freeview Box

8 Steps  
(Steps 1-5)

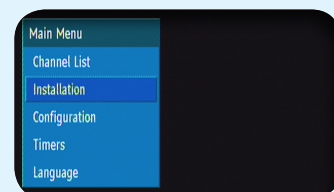
This guide can be used to help you re-tune any of the following products with the remote control below:

Matsui DTR3, Dighome DV940B, Goodmans GDB2,  
Pacific PSTB1, Pacific PSTB0802, Hitachi HDB60,  
Hitachi HDB65

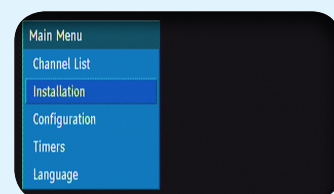
**Make sure your box is on and press 80  
for the BBC News channel**



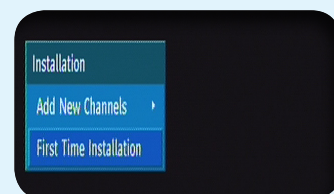
1) Press the Menu button once



2) Using the Down Arrow button select Installation on the second line of the menu and press the Select button



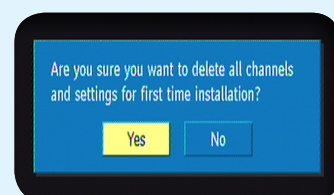
3) Using the Down Arrow button select First Time Installation and press the Select button



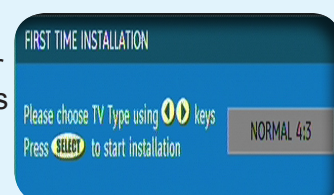
The message 'Are you sure you want to delete all channels...' will appear



4) **Don't worry!** Select Yes to confirm and press the Select button



5) Press the Select button for a 4:3 TV or use the arrow buttons to select 16:9 for a widescreen TV and press the Select button



Manufacturer Helpline: **01753 834501**

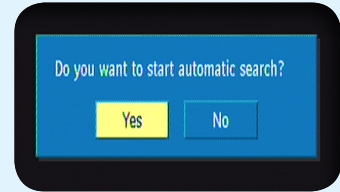
email: [info@vestel-uk.com](mailto:info@vestel-uk.com)

# Re-tuning: MATSUI DTR3 Freeview Box

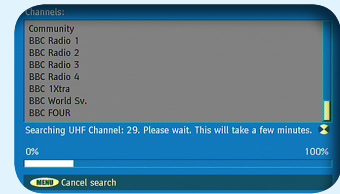
8 Steps  
(Steps 6-8)



6) Select **Yes** and press the **Select** button



7) A re-tune screen will appear  
  
No action required



8) BBC1 will play out when the re-tune has completed  
  
No action required



You have completed the procedure and can continue viewing digital channels.

Manufacturer Helpline: **01753 834501**

email: [info@vestel-uk.com](mailto:info@vestel-uk.com)