

Re-tuning: Matsui Freeview Box

8 Steps
(Steps 1-5)

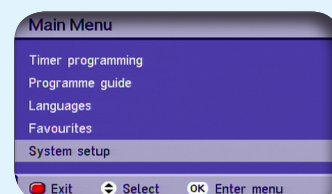
This guide can be used to help you re-tune any of the following products with the remote control below:

Matsui TOPD2, Astratec TOPD1

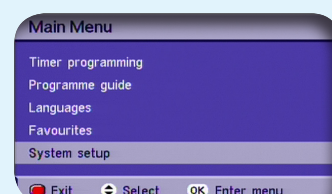
Make sure your box is on and press 80 for the BBC News channel



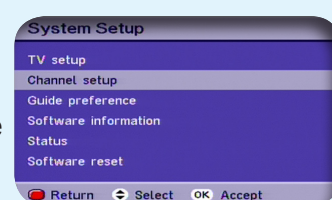
- 1) Press the Setup button



- 2) Use the down arrow button to select System Setup on the fifth line of the menu and press the OK button



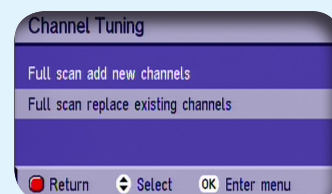
- 3) Use the down arrow button to select Channel Setup on the second line of the menu and press the OK button



- 4) Use the down arrow button to select Channel Tuning on the third line of the menu and press the OK button



- 5) Select Full Scan Replace Existing Channels and press the OK button



Manufacturer Helpline: 020 8847 8601

email: contact@digitalvisiontv.com

Re-tuning: Matsui Freeview Box

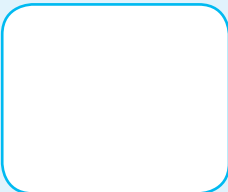
8 Steps
(Steps 6-8)



6) Scanning Screen

No action required

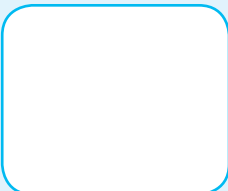
Full Scan Replace Existing Channels			
CN	Name	Provider	Type
718	SMOOTH RADIO	GMG	TV
015	Film4	Channel 4 TV	TV
045	Lottery Xtra	Camelot Group p	TV
041	TOPUP Anytime4	Top Up TV Europ	TV
025	Dave ja vu	UKTV	TV
085	Russia Today	Information TV	TV
033	smile TV2	und	TV
036	Create & Craft	Ideal Shopping	TV
0%		100%	
Please wait while scanning			



7) Completion Screen

No action required

Full Scan Replace Existing Channels			
CN	Name	Provider	Type
725	Premier Radio	London Christia	TV
723	talkSPORT	talkSPORT	TV
019	Dave	UKTV	TV
032	smileTV	Square1 Managem	TV
029	E4+1	Channel 4 TV	TV
011	SKY THREE	Sky	TV
083	Sky Spts News	Sky	TV
082	Sky News	Sky	TV
0%		<div></div> 100%	
Complete - 95 new channels added			



8) BBC1 will automatically play out

No action required



You have completed the procedure and can continue viewing digital channels.

Manufacturer Helpline: 020 8847 8601

email: contact@digitalvisiontv.com