

Re-tuning: **TECHWOOD FV2 Freeview Box** 9 Steps (Steps 1-5)

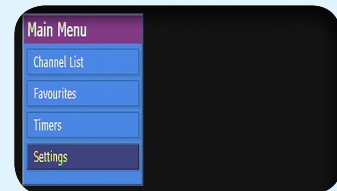
This guide can be used to help you re-tune any of the following products with the remote control below:

Techwood TWDFV2, Wharfedale DV832, Durabrand C5660,
Matsui DTR1,DTR2,DTR31 & MSTB926, Acoustic Solutions DV600,
Logik LDR1, Seg AESEGS7, Digilogic DSTB1000 & DSTB1500,
Lodos DVBT3, Mitsubishi BD68STB, ONN OSTB01

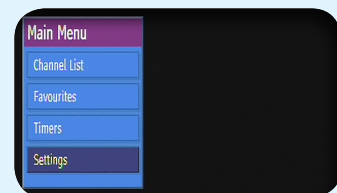
**Make sure your box is on
and press 80 for the
BBC News channel**



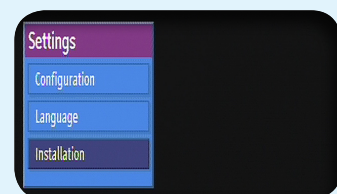
- 1) Press the Menu button



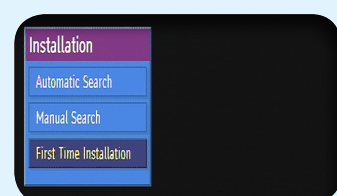
- 2) Use the Down Arrow button to select **Settings** on the fourth line of the menu and press the **Select** button



- 3) Use the Down Arrow button to select **Installation** on the third line of the menu and press the **Select** button



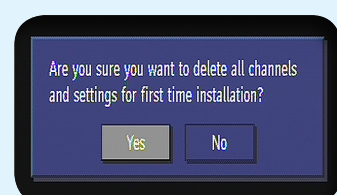
- 4) Use the Down Arrow button to select **First Time Installation** and press the **Select** button



The message 'Are you sure you want to delete all channels' will appear



- 5) **Don't worry!** Use the arrow buttons to select **Yes** and press the **Select** button to confirm



Manufacturer Helpline: **01753 834 501**

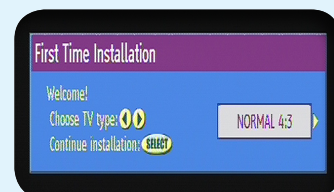
email: **info@vestel-uk.com**

Re-tuning: **TECHWOOD FV2** Freeview Box

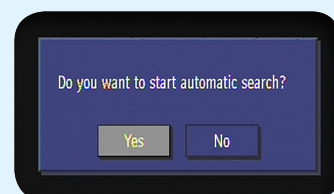
9 Steps
(Steps 6-9)



- 6) Press the **Select** button if you have a 4:3 TV or use the arrow buttons to select 16:9 for widescreen TVs

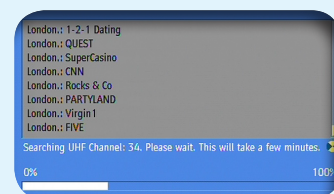


- 7) Use the arrow buttons to select **Yes** and press the **Select** button



- 8) A re-tune screen will appear

No action required



- 9) BBC 1 will automatically play out when the retune has completed

No action required



You have completed the procedure and can continue viewing digital channels.

Manufacturer Helpline: **01753 834 501**

email: **info@vestel-uk.com**